

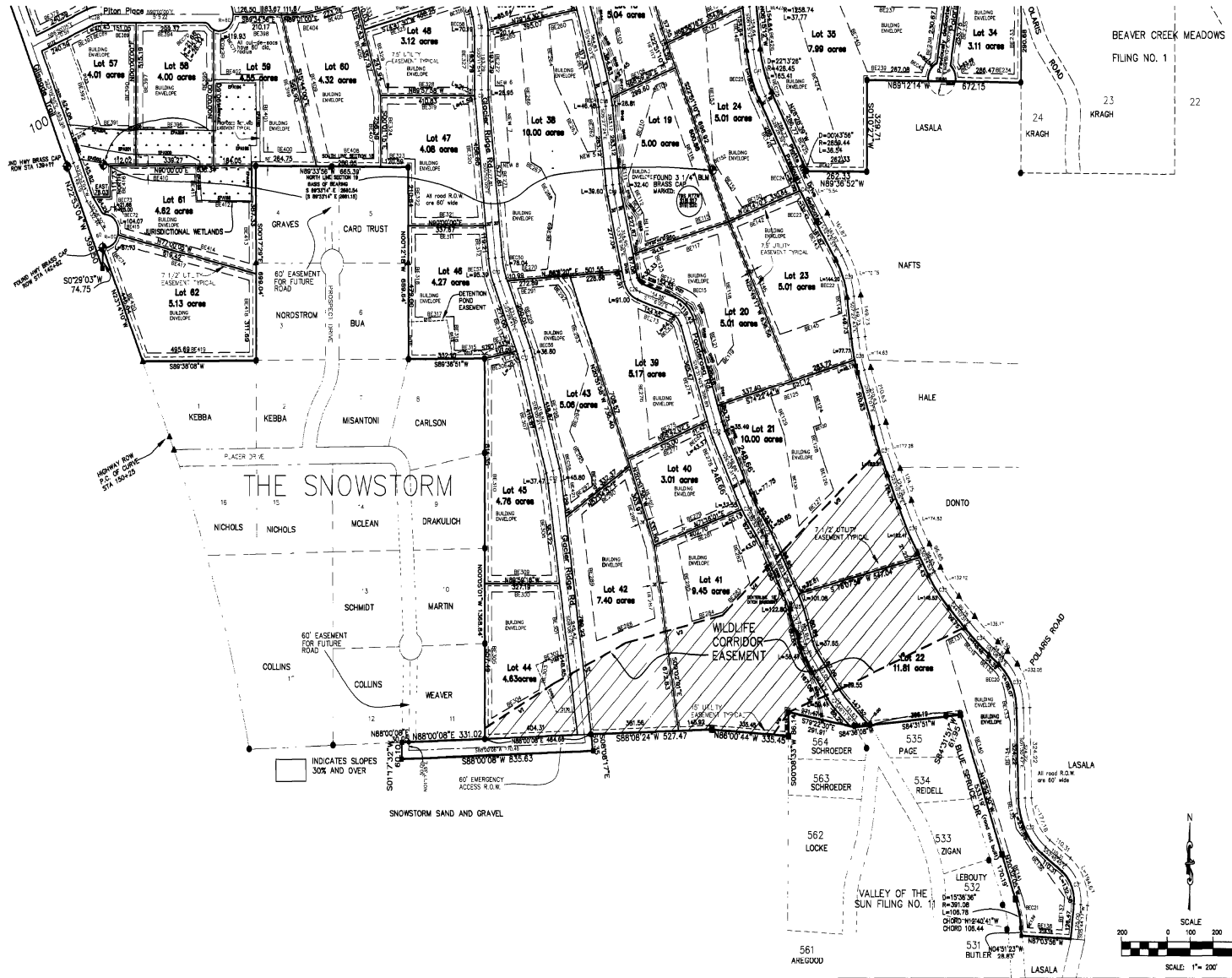
Glacier Ridge
3 of 4

LEGEND

- ◆ INDICATES FOUND MONUMENT AS SHOWN
- INDICATES SET NO. 6 REBAR WITH 3 1/4" ALUM CAP MARKED AS SHOWN
- ▲ INDICATES FOUND NO. 5 REBAR WITH 1 1/2" ALUM. CAP, LS 2816, OR AS SHOWN
- INDICATES FOUND NO. 5 REBAR WITH 1" PLASTIC CAP, OR 1 1/4" ALUM CAP, LS 4440
- INDICATES SET NO. 5 REBAR WITH 1 1/2" ALUM. CAP, LS 11944
- () INDICATES FIELD MEASUREMENTS UNLESS OTHERWISE NOTED.

GLACIER RIDGE

PARTS OF SECTIONS 17, 18, 19, & 20
T.9S., R.77W., 6th P.M.
PARK COUNTY, COLORADO



DRAWING NUMBER
PARK COUNTY, COLORADO
REGISTERED PLAT NUMBER 17999

DRAWING NUMBER
PARK COUNTY, COLORADO
REGISTERED PLAT NUMBER 17999

DRAWING NUMBER
PARK COUNTY, COLORADO
REGISTERED PLAT NUMBER 17999

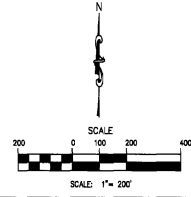
SURVEYOR'S CERTIFICATE

I hereby certify that the survey and plat of the real property shown and described hereon were made by me or under my direct responsibility, supervision, and checking, in strict compliance with Colorado statutes, and that both survey and plat are true, accurate and complete.

Thomas L. Burns
Registered Land Surveyor

Thomas L. Burns
Colorado License No. 17999

Date: July 2, 2007



GLACIER RIDGE SHEET 3 OF 4			
DESIGNED BY: TMO	DATE: 10/26/02	SCALE: 1"=200'	DRAWN BY: GJ
PROJECT # 0003 GLACIER RIDGE		CADD FILE: BASE-1-200	
TETRA TECH, INC. INFRASTRUCTURE SERVICES GROUP 410 S French Street, P.O. Box 1659 Breckenridge, CO 80424 (970) 453-4394 Fax (970) 453-4579 <small>Formerly PJD Engineers</small>		DRAWING NUMBER:	
		REVISIONS	