

DRAWING NUMBER

DRAWING NUMBER

DRAWING NUMBER

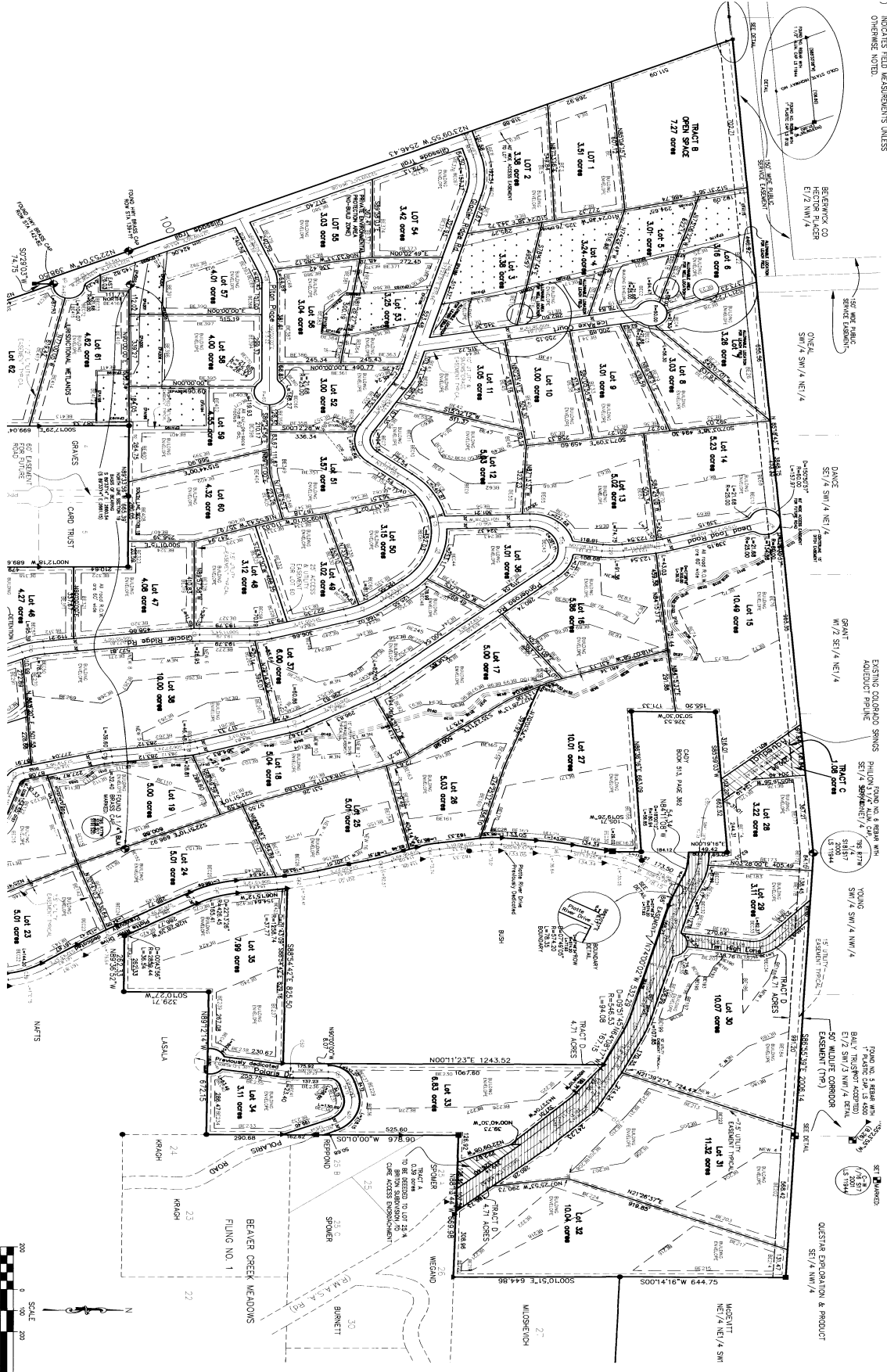
PLAN HOLD CORPORATION • IRVINE, CALIFORNIA
ENGINEER BY: [Signature]

PLAN HOLD CORPORATION • IRVINE, CALIFORNIA
ENGINEER BY: [Signature]

PLAN HOLD CORPORATION • IRVINE, CALIFORNIA
ENGINEER BY: [Signature]

- LEGEND**
- ◆ INDICATES FOUND MONUMENT AS SHOWN
 - INDICATES SET NO. 5 REBAR WITH 3/4" ALUM CAP MARKED AS SHOWN
 - ▲ INDICATES FOUND NO. 5 REBAR WITH 1 1/2" ALUM CAP, LS 2816, OR AS SHOWN
 - INDICATES FOUND NO. 5 REBAR WITH 1" PLASTIC CAP OR 1 1/4" ALUM CAP, LS 4400
 - INDICATES SET NO. 5 REBAR WITH 1/2" ALUM CAP, LS 1944
 - () INDICATES FOUND AS SHOWN UNLESS OTHERWISE NOTED

GLACIER RIDGE
PARTS OF SECTIONS 17, 18, 19, & 20
T.9S., R.77W., 6th P.M.
PARK COUNTY, COLORADO



SURVEYORS CERTIFICATE

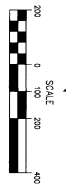
I hereby certify that the survey and part of the real property shown and described in this plat were made and returned to me by the owner and that the same are correct and complete.

Witness my hand and seal of office this 17th day of August, 1994.

[Signature]

Surveyor

Date



GLACIER RIDGE	
SHEET 2 OF 4	
DATE	1994
BY	[Signature]
CHECKED BY	[Signature]
SCALE	1" = 200'
TETRA TECH, INC. 14001 W. 10th Ave., Suite 100 Denver, CO 80202 (303) 755-1100	
DRAWING NUMBER: _____ REVISIONS: _____	